

ADA Ramp Codes

RAMP CODES 4.8*

4.8.1 General

Any part of an accessible route with a slope greater than 1:20 shall be considered a ramp and shall comply with 4.8.

4.8.2 Slope and Rise

The least possible slope shall be used for any ramp. The maximum slope of a ramp in new construction shall be 1:12. The maximum rise for any ramp run shall be 30 inches. Curb ramps and ramps to be constructed on existing sites or in existing buildings or facilities may have slopes and rises, if space limitations prohibit the use of a 1:12 slope or less.

4.8.3 Clear Width

The minimum clear width of a ramp shall be 36 inches.

4.8.4 Landings

Ramps shall have level landings at the bottom and top of each run. Landings shall have the following features:

1. The landing shall be at least as wide as the widest ramp run leading to it.
2. The landing length shall be a minimum of 60 inches clear.
3. If ramps change direction at landings, the minimum landing size shall be 60 in. x 60 in.
4. If a doorway is located at a landing, then the area in front of the door shall comply with 4.13.6.

4.13.6 Maneuvering Clearances at Doors

Minimum maneuvering clearances at doors that are not automatic or power assisted shall be as shown in Fig 25 (next page). The floor or ground area within the required clearances shall be level and clear.

4.8.5 Handrails

If a ramp run has a rise greater than 6 inches or a horizontal projection greater than 72 inches, then it shall have handrails on both sides. Handrails are not required on curb ramps. Handrails shall have the following features.

1. Handrails shall be provided along both sides of ramp segments. The inside handrail on switchbacks or dogleg ramps shall always be continuous.
2. If handrails are not continuous, they shall extend at least 12 inches beyond the top and bottom of the ramp segment and shall be parallel with the floor or ground surface.



3. The clear space between the handrail and the wall shall be 1 1/2 inches. Handrails may be located in a recess if the recess is a maximum of 3 inches deep and extends at least 18 inches above the top of the rail.
4. Gripping surfaces shall be continuous, without interruption by newel posts, other construction elements, or obstructions.
5. The diameter or width of the gripping surface of a handrail shall be 1 1/4 inches to 1 1/2 inches or the shape shall provide an equivalent gripping surface.
6. The top of the handrail gripping surfaces shall be mounted between 34 inches and 38 inches above ramp surfaces.
7. A handrail and any wall or other surface adjacent to it shall be free of any sharp or abrasive elements. Edges shall have a minimum radius of 1/8 inch.

4.8.6 Cross slope and Surfaces

The cross slope of ramp surfaces shall be no greater than 1:50. Ramp surfaces shall comply with 4.5.

4.5.1 General

Ground and floor surfaces along accessible routes and in accessible rooms and spaces including floors, walks, ramps, stairs, and curb ramps shall be stable, firm, slip resistant, and shall comply with 4.5.

4.8.7 Edge Protection

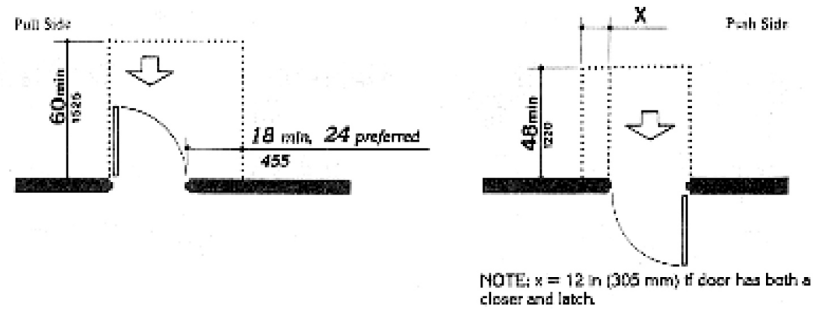
Ramps and landings with drop-offs shall have curbs, walls, railings, or projection surfaces that prevent people from slipping off the ramp. Curbs shall be a minimum of 2 inches high.

4.8.8 Outdoor Conditions

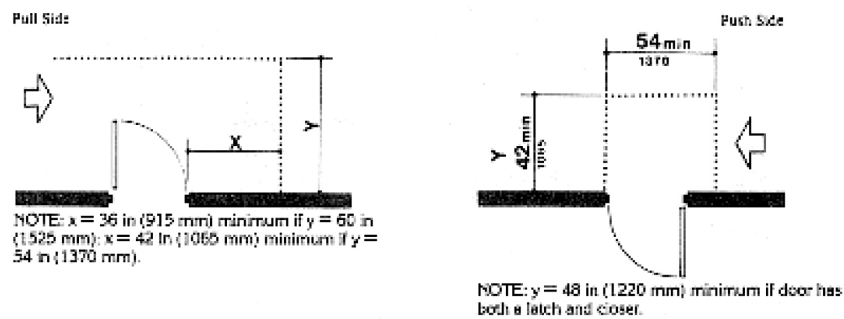
Outdoor ramps and their approaches shall be designed so that water will not accumulate on walking surfaces.

* This is a partial reprint of the codes for ramping as outlined in the A.N.S.I codes A117.1-1986, A.D.A. codes EEOC-BK-19, and U.F.A.S. codes outlined by the federal government.

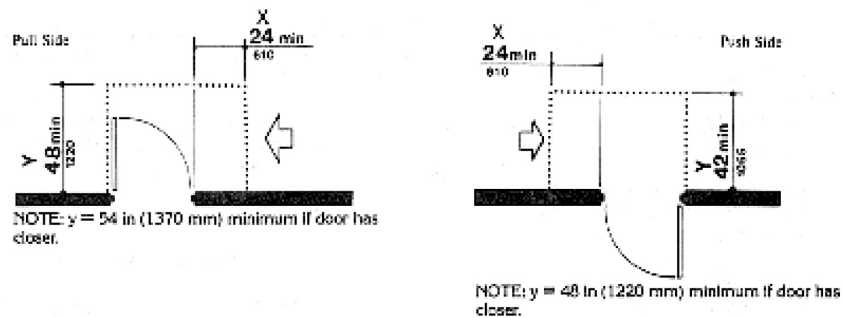
Fig. 25



(a)
Front Approaches — Swinging Doors

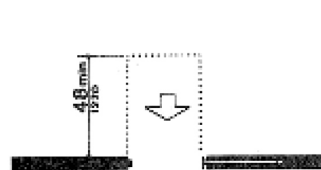


(b)
Hinge Side Approaches — Swinging Doors

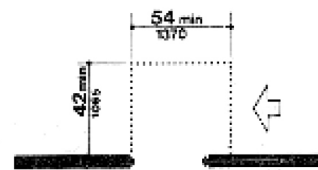


(c)
Latch Side Approaches — Swinging Doors

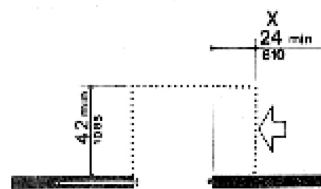
NOTE: All doors in alcoves shall comply with the clearances for front approaches.



(d)
Front Approach — Sliding Doors
and Folding Doors



(e)
Side Side Approach — Sliding Doors
and Folding Doors



(f)
Latch Side Approach — Sliding Doors
and Folding Doors